

CITY OF SANTA PAULA

HARVARD BOULEVARD SEWER PIPELINE, WATER MAINLINE AND PAVEMENT REPLACEMENT PROJECT



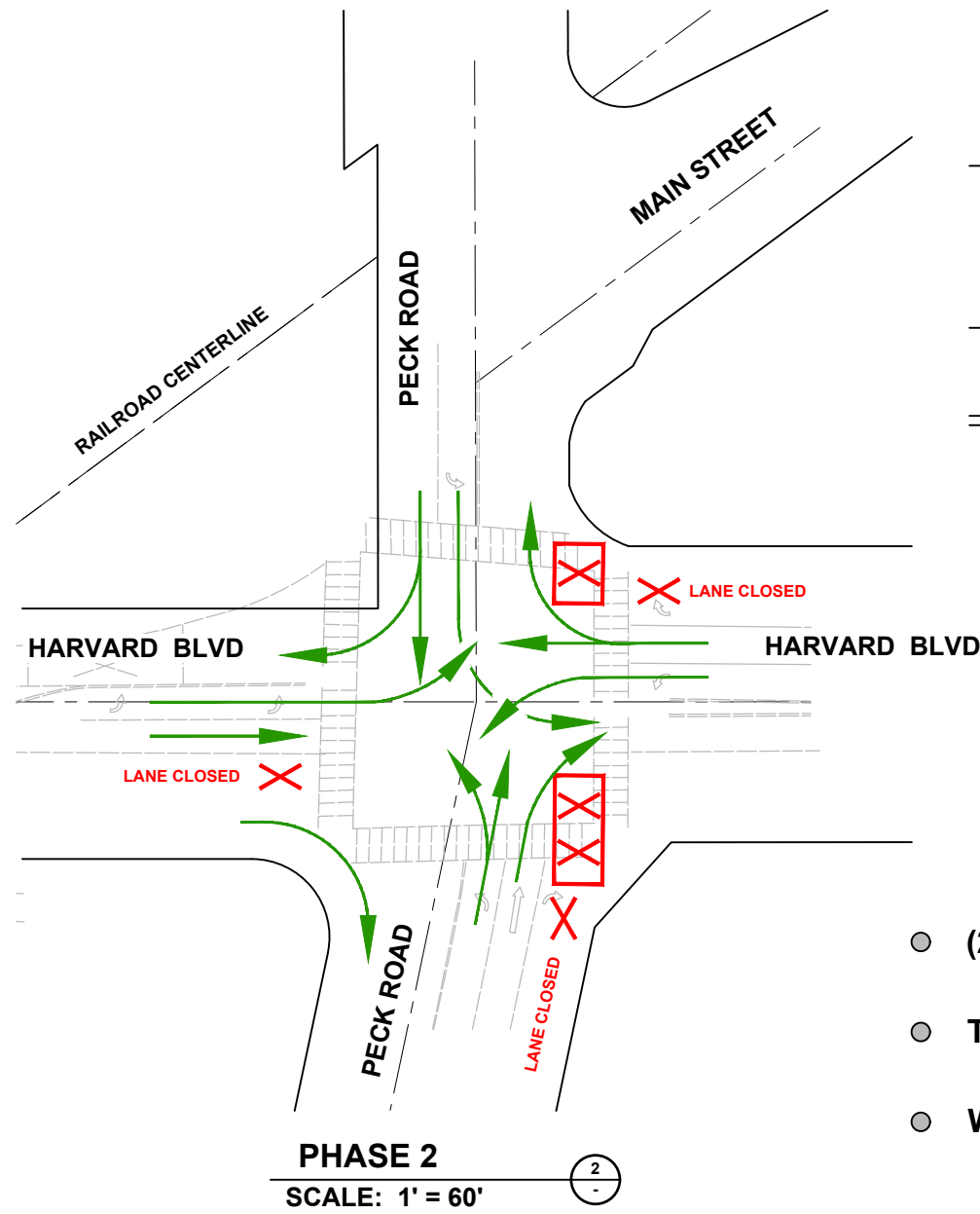
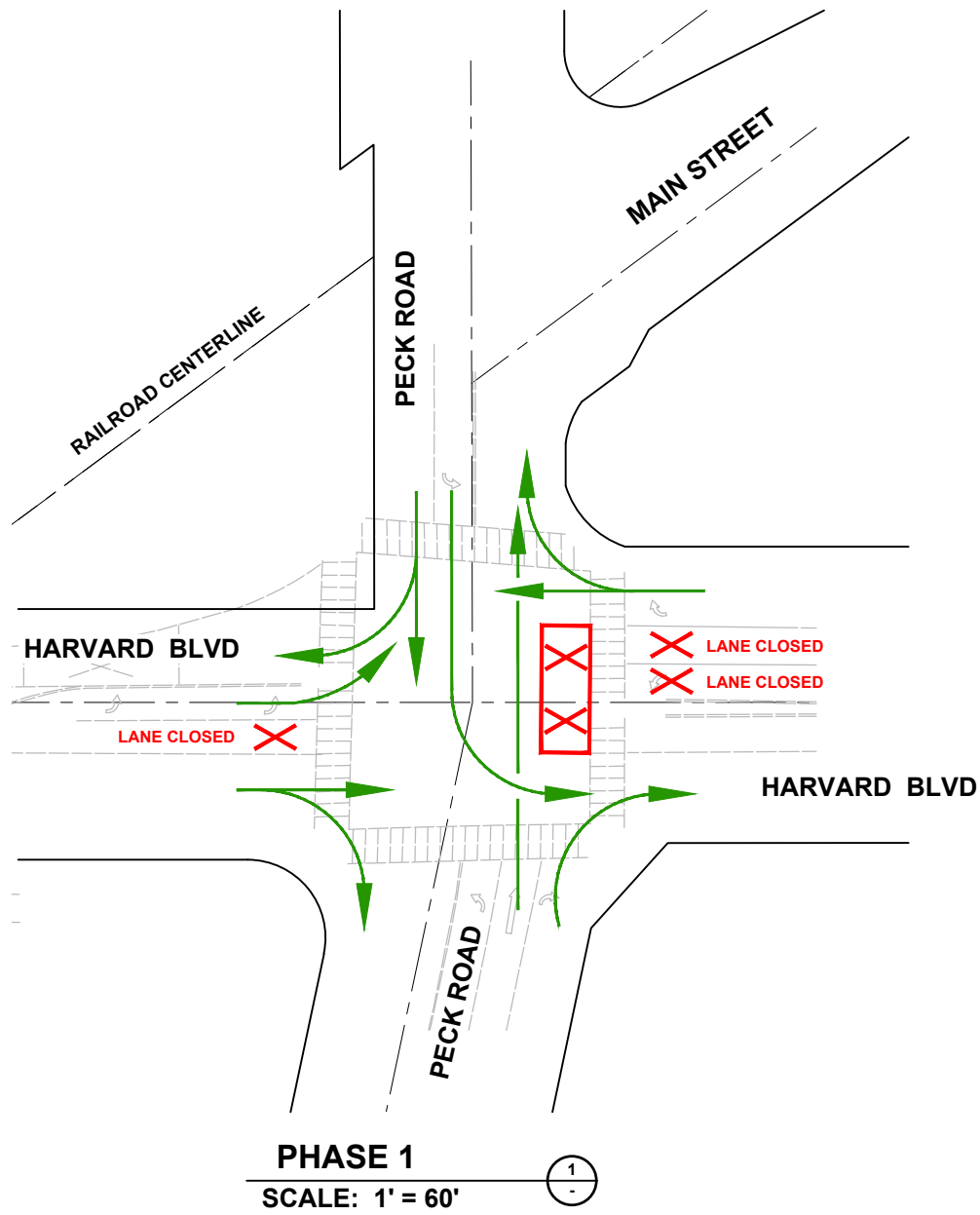
Night work will be performed on Tuesday 11/1 and Wednesday 11/2 in the intersections of Peck Road and Harvard Blvd. and in the intersection of Palm Ave. and Harvard Blvd. Certain turning movements will not be allowed. Please use alternate route. Work hours are from 9 p.m. to 6 a.m.

Please visit the project website for more information and schedule updates:

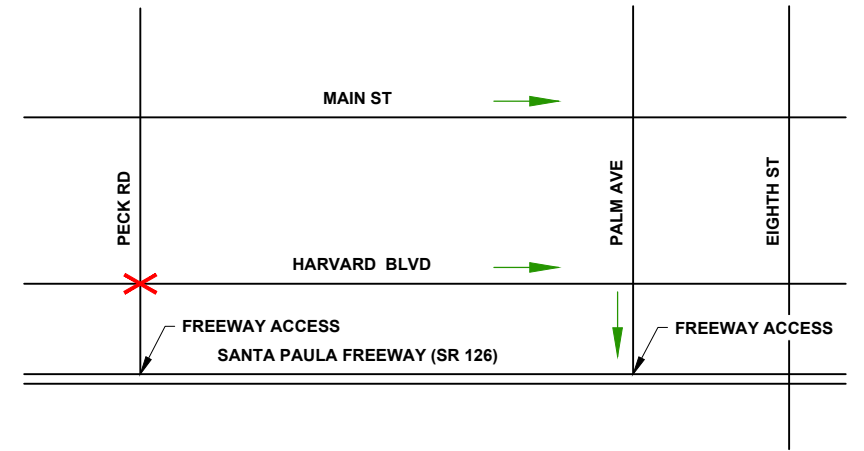
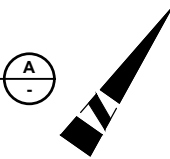
www.harvardblvdproject.com



For questions or concerns please contact the Construction Manager :
Jon Turner, PE - 805-518-2992 - Harvard@phoenixcivil.com



HARVARD BLVD AND PECK ROAD INTERSECTION



FREEWAY ACCESS DETOUR MAP

NO SCALE

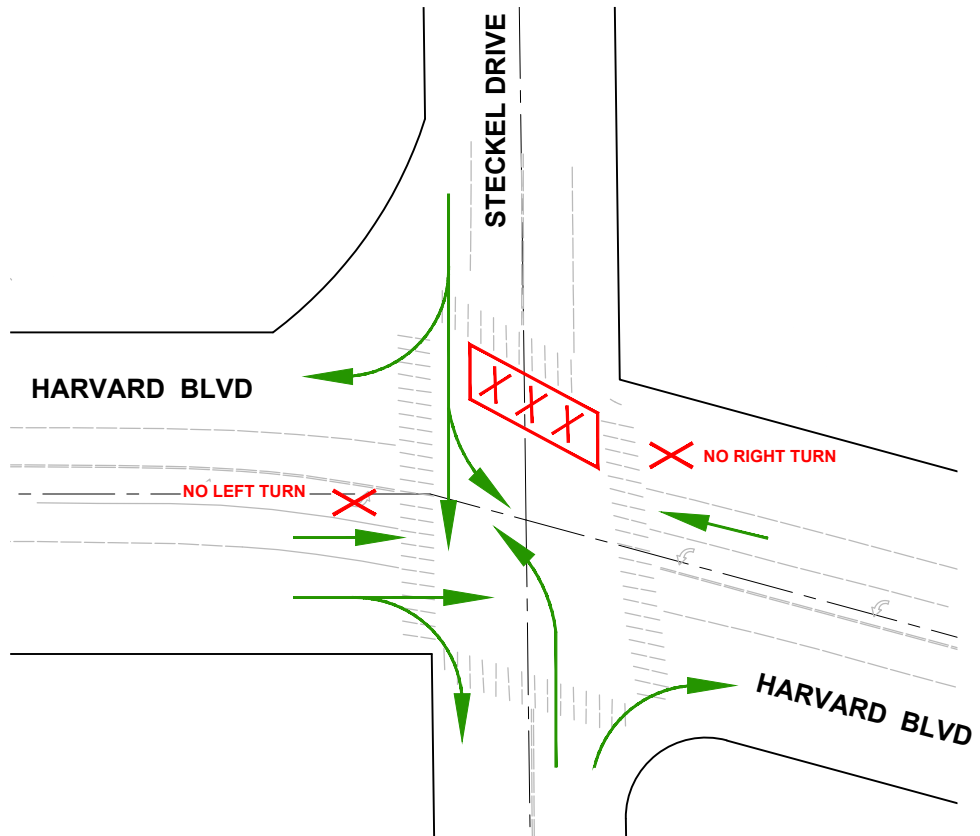
- (2) PHASE CLOSURE
- TWO NIGHT CLOSURE (TENTATIVELY 11 / 1 AND 11 / 2)
- WORK HOURS 9 PM TO 6 AM

VERIFY SCALES
BAR IS ONE INCH ON ORIGINAL DRAWING
0 1
IF NOT ONE INCH ON THIS SHEET,
ADJUST SCALES ACCORDINGLY

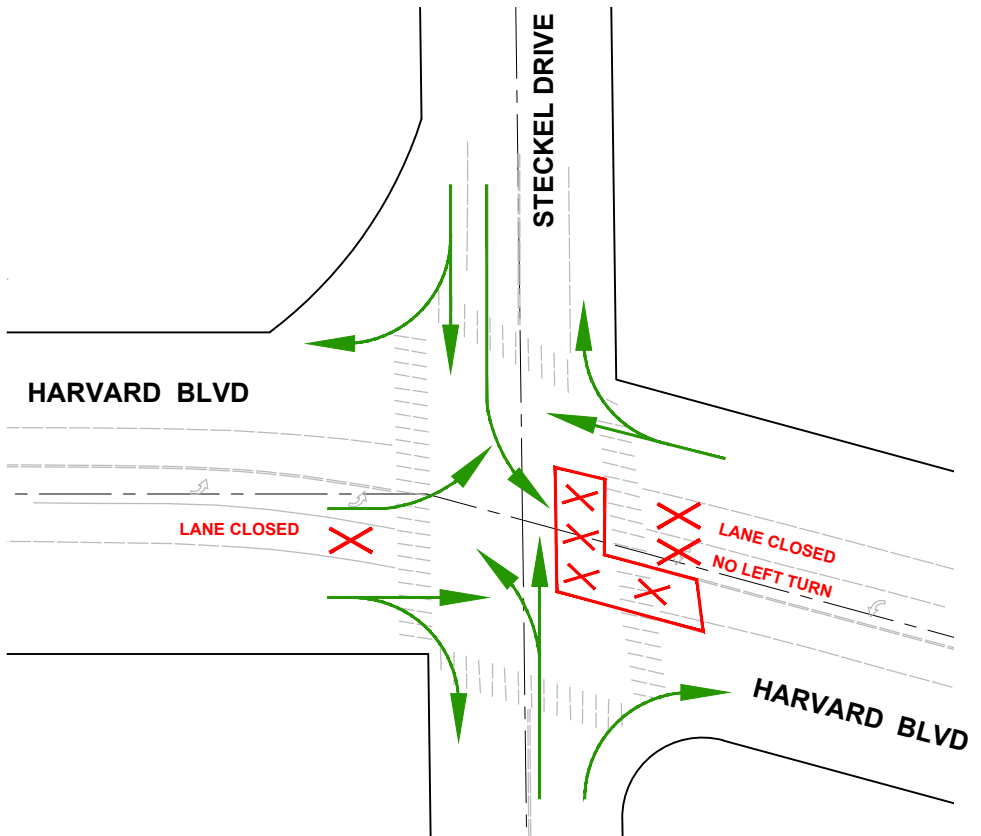


PREPARED BY:
PHOENIX CIVIL ENGINEERING, INC.
535 E. MAIN STREET
SANTA PAULA, CA 93060
(805) 658-6800

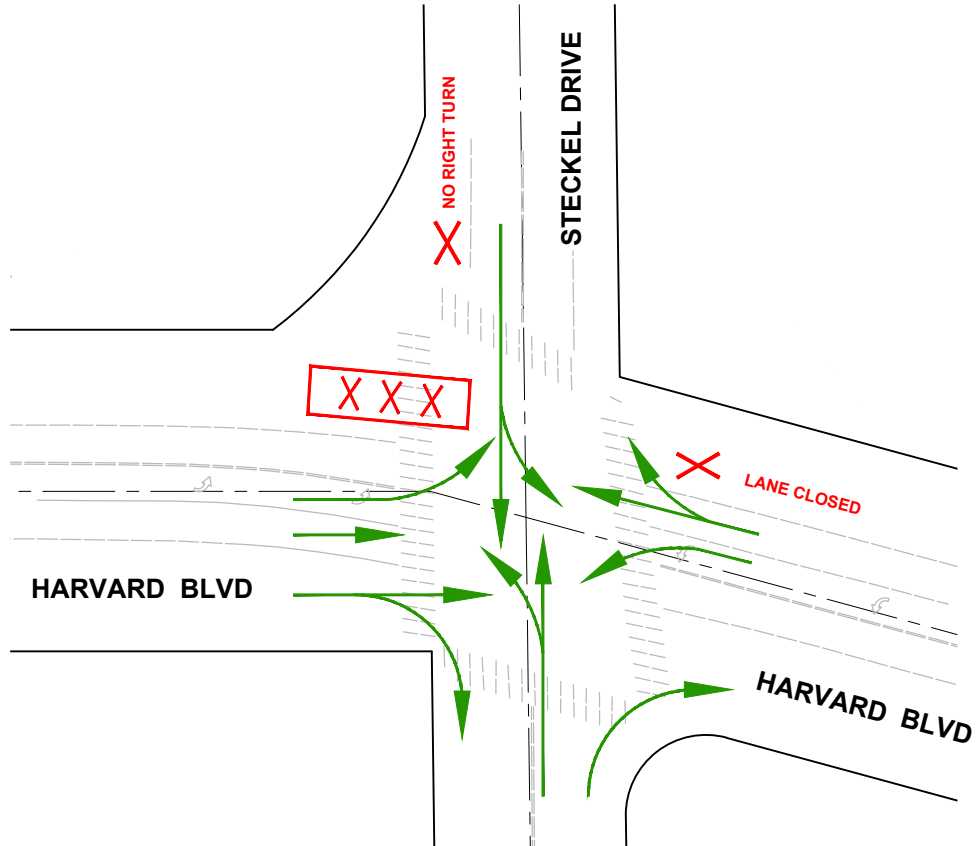




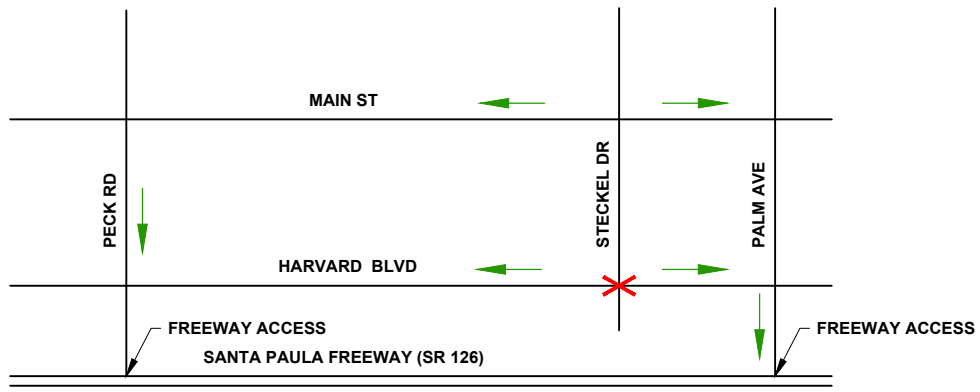
PHASE 1
SCALE: 1' = 60'



PHASE 2
SCALE: 1' = 60'



PHASE 3
SCALE: 1' = 60'



FREEWAY ACCESS DETOUR MAP
NO SCALE

- (3) PHASE CLOSURE
- WORK HOURS 8 AM TO 4 PM

VERIFY SCALES
BAR IS ONE INCH ON ORIGINAL DRAWING
0 ——— 1
IF NOT ONE INCH ON THIS SHEET,
ADJUST SCALES ACCORDINGLY

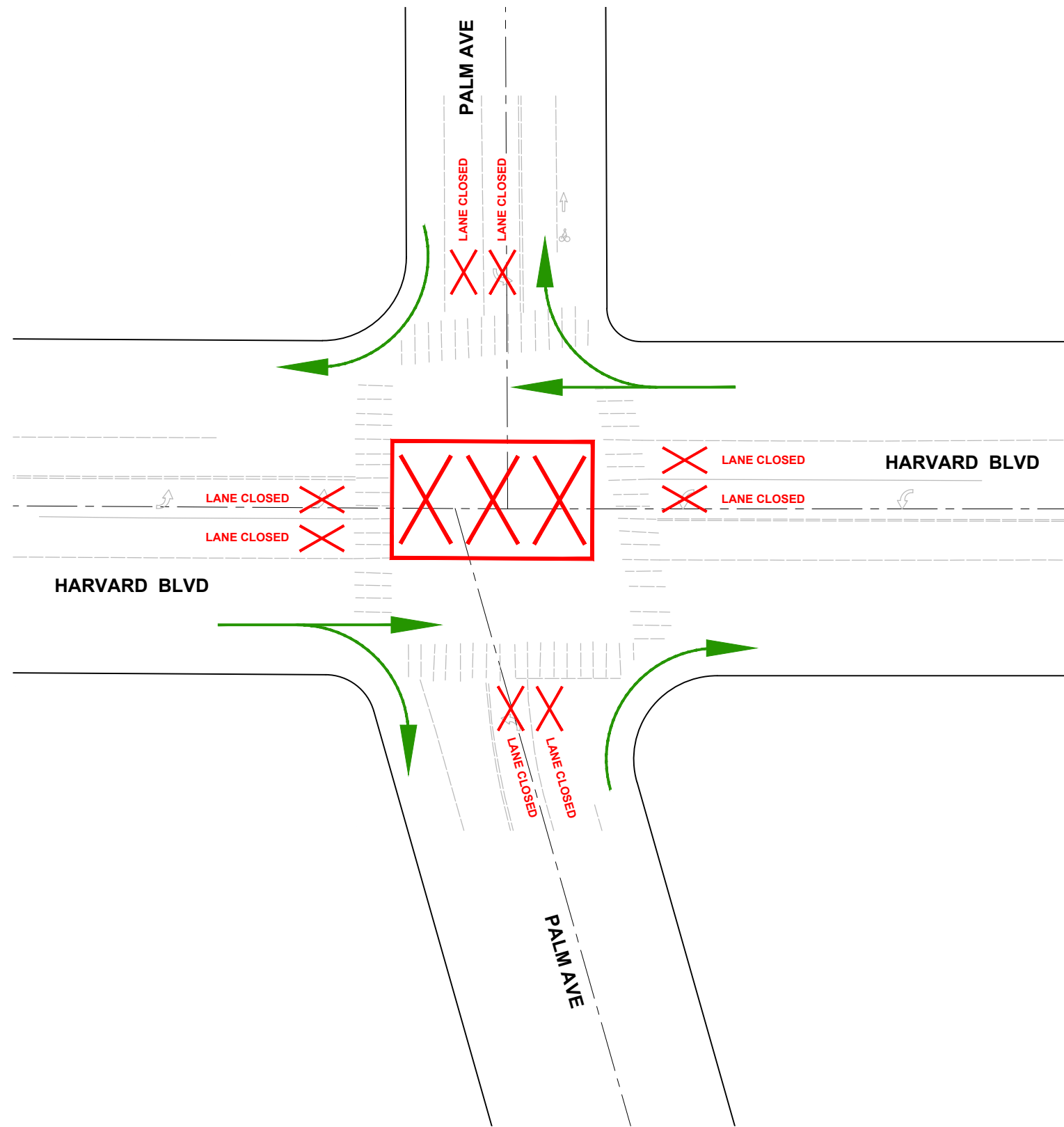
HARVARD BLVD AND STECKEL DRIVE INTERSECTION

B

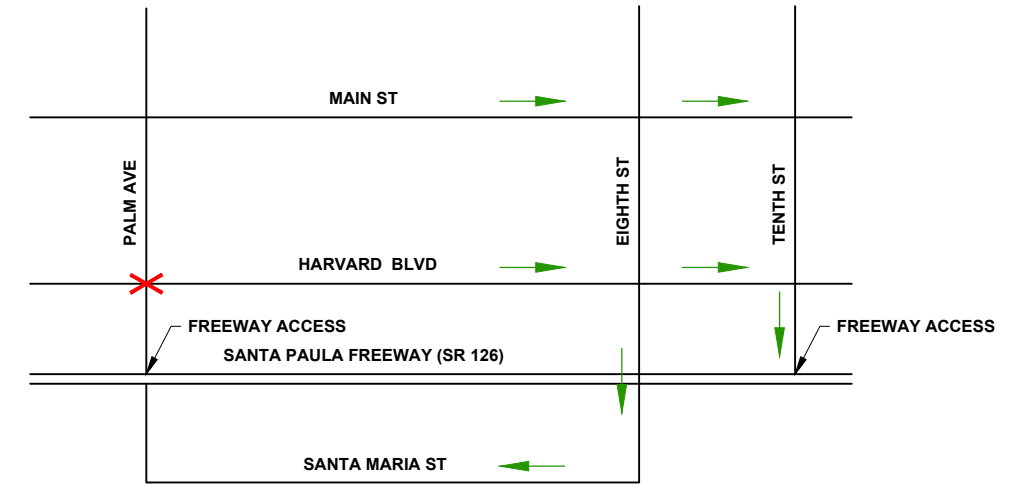


PREPARED BY:
PHOENIX CIVIL ENGINEERING, INC.
535 E. MAIN STREET
SANTA PAULA, CA 93060
(805) 658-6800





HARVARD BLVD AND PALM AVE INTERSECTION
 SCALE: 1" = 40'



FREEWAY ACCESS DETOUR MAP
 NO SCALE

- TWO NIGHT CLOSURE (TENTATIVELY 11 / 1 AND 11 / 2)
- WORK HOURS 9 PM TO 6 AM
- NO LEFT OR THROUGH MOVEMENTS ALONG PALM AVENUE IN THE NORTH / SOUTH DIRECTION

VERIFY SCALES
 BAR IS ONE INCH ON ORIGINAL DRAWING
 0 ——— 1
 IF NOT ONE INCH ON THIS SHEET,
 ADJUST SCALES ACCORDINGLY



PREPARED BY:
 PHOENIX CIVIL ENGINEERING, INC.
 535 E. MAIN STREET
 SANTA PAULA, CA 93060
 (805) 658-6800

