

# CITY OF SANTA PAULA

## HARVARD BOULEVARD SEWER PIPELINE, WATER MAINLINE AND PAVEMENT REPLACEMENT PROJECT



El trabajo nocturno se realizará el martes 1 de noviembre y el miércoles 2 de noviembre en las intersecciones de Peck Road y Harvard Blvd. y en la intersección de Palm Ave. y Harvard Blvd. No se permitirán ciertos movimientos de giro. Utilice una ruta alternativa. El horario de trabajo es de 9 p.m. a las 6 a. m.

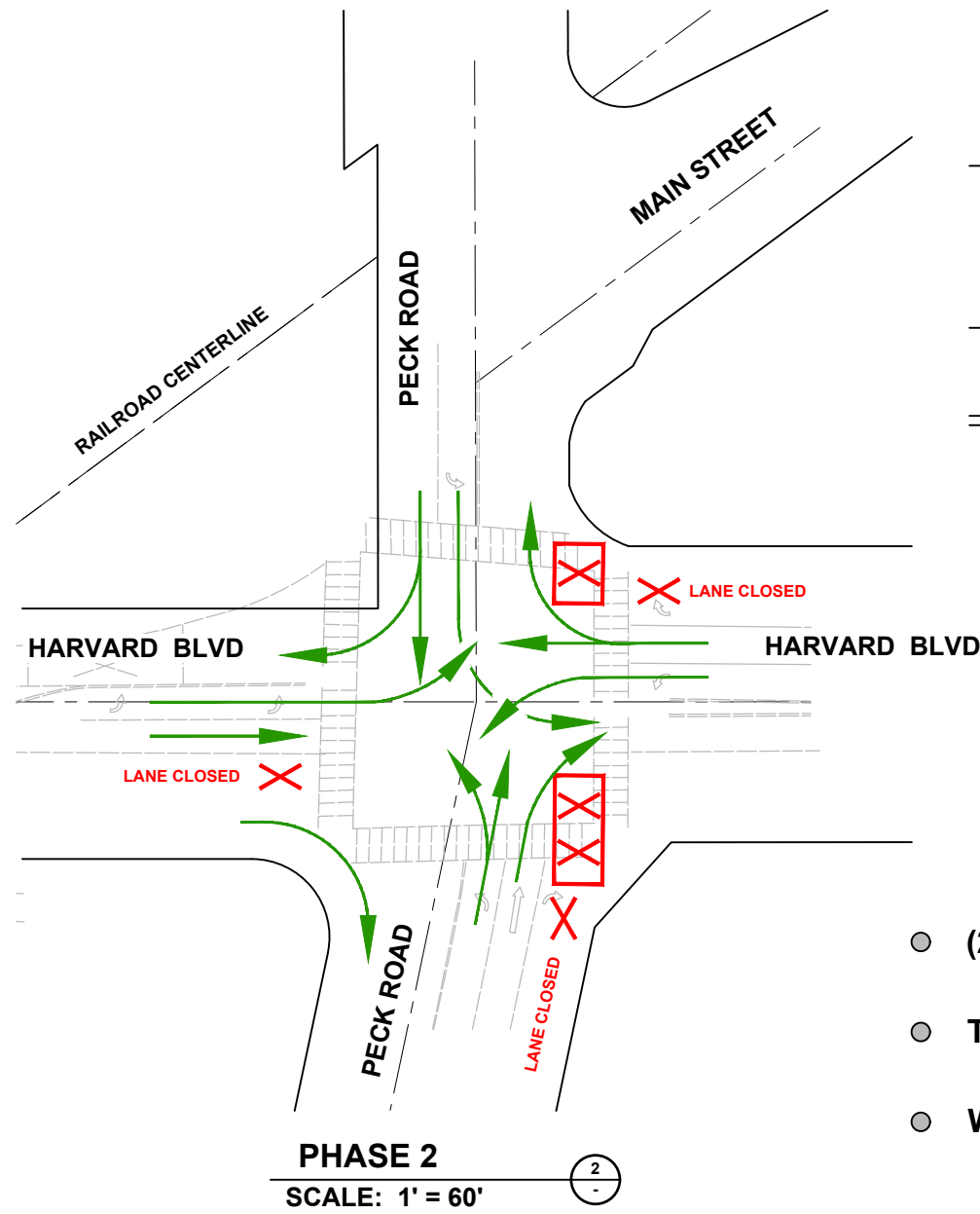
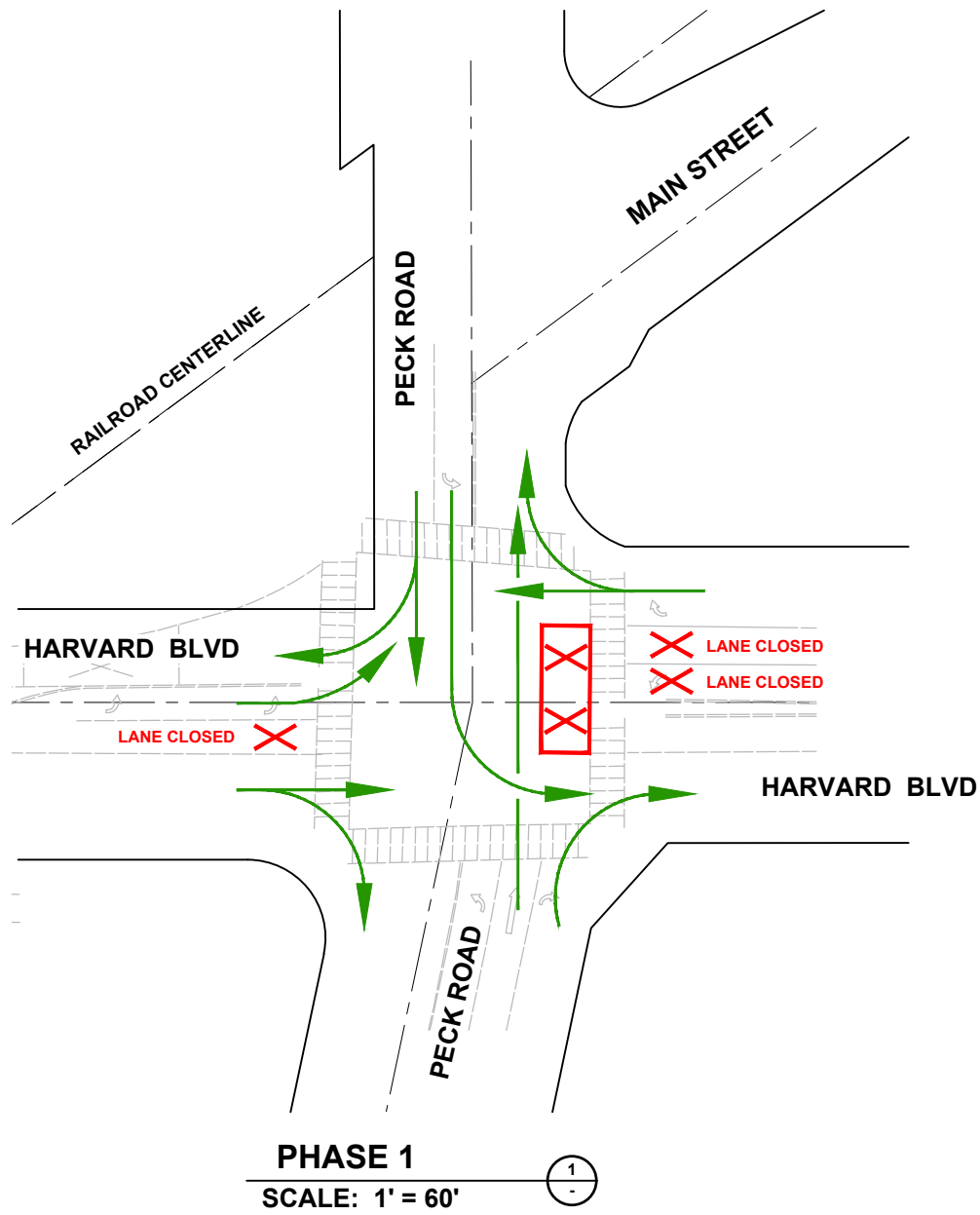
Visite el sitio web del proyecto para obtener más información y actualizaciones de los horarios:

[www.harvardblvdproject.com](http://www.harvardblvdproject.com)

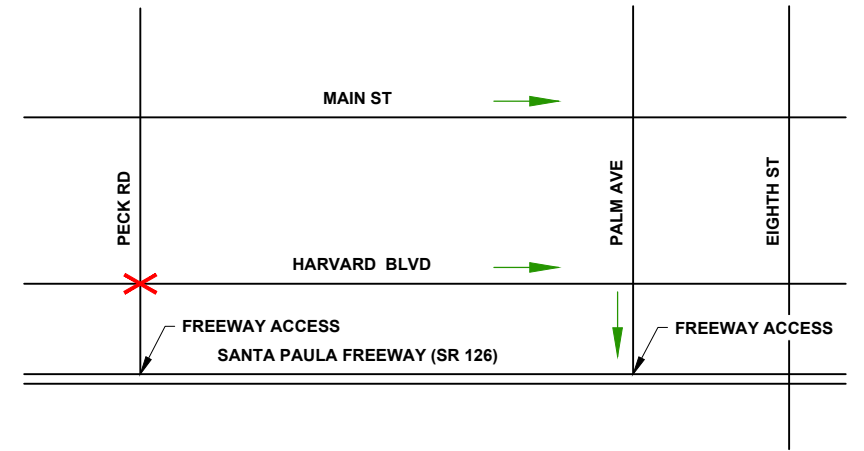
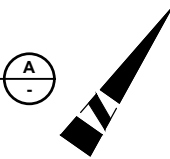


Para preguntas o inquietudes, comuníquese con el Gerente de Construcción:

Jon Turner, PE - 805-518-2992 - [Harvard@phoenixcivil.com](mailto:Harvard@phoenixcivil.com)



**HARVARD BLVD AND PECK ROAD INTERSECTION**



**FREEWAY ACCESS DETOUR MAP**

NO SCALE

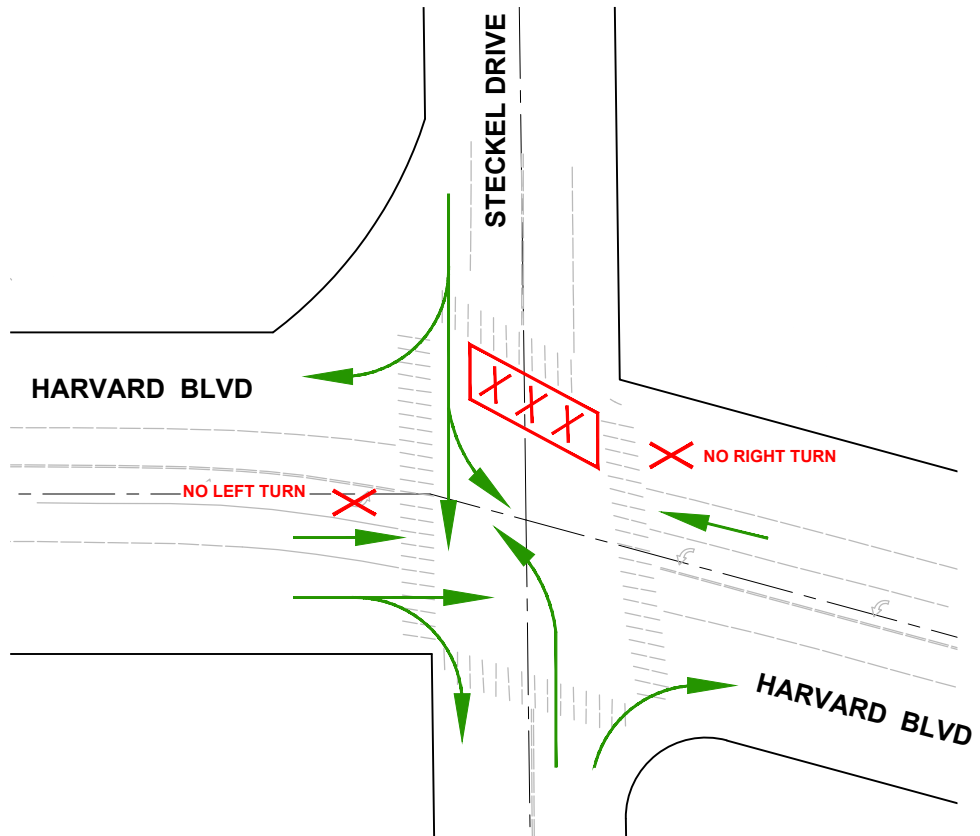
- (2) PHASE CLOSURE
- TWO NIGHT CLOSURE (TENTATIVELY 11 / 1 AND 11 / 2)
- WORK HOURS 9 PM TO 6 AM

VERIFY SCALES  
BAR IS ONE INCH ON ORIGINAL DRAWING  
0 1  
IF NOT ONE INCH ON THIS SHEET,  
ADJUST SCALES ACCORDINGLY

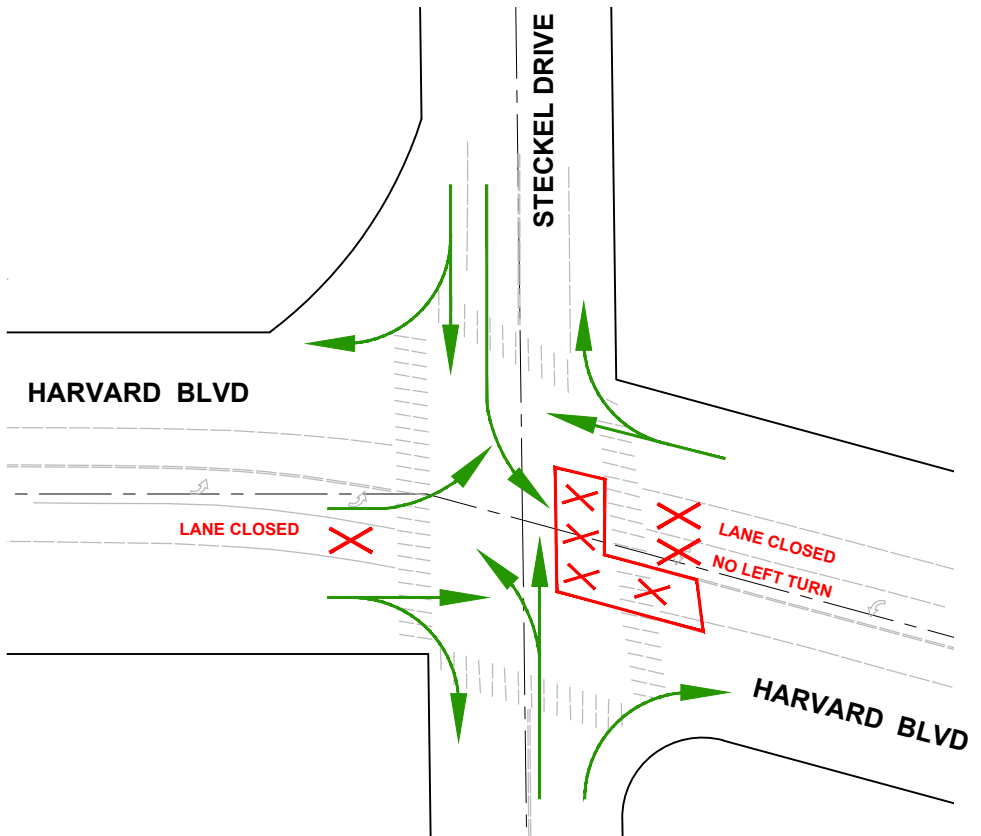


PREPARED BY:  
PHOENIX CIVIL ENGINEERING, INC.  
535 E. MAIN STREET  
SANTA PAULA, CA 93060  
(805) 658-6800

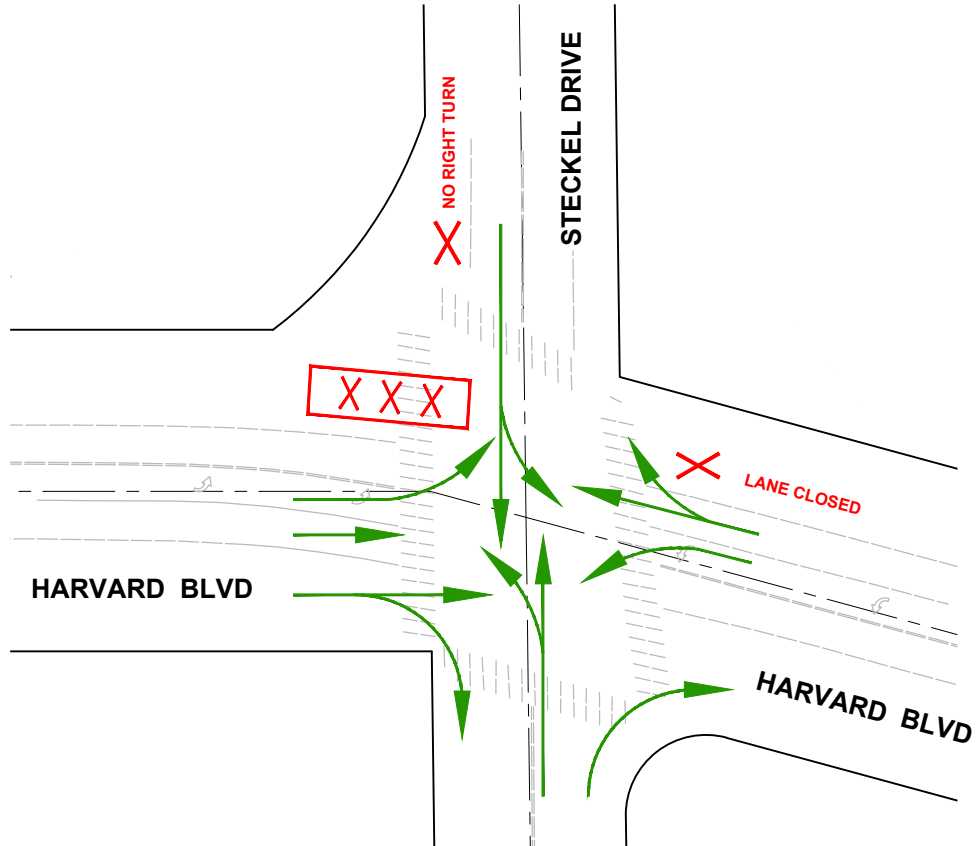




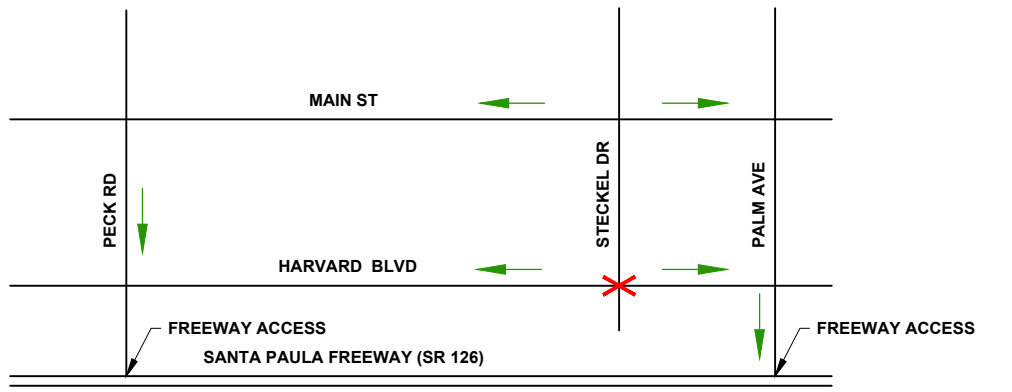
**PHASE 1**  
SCALE: 1' = 60'



**PHASE 2**  
SCALE: 1' = 60'



**PHASE 3**  
SCALE: 1' = 60'



**FREEWAY ACCESS DETOUR MAP**  
NO SCALE

- (3) PHASE CLOSURE
- WORK HOURS 8 AM TO 4 PM

VERIFY SCALES  
BAR IS ONE INCH ON ORIGINAL DRAWING  
0 1  
IF NOT ONE INCH ON THIS SHEET,  
ADJUST SCALES ACCORDINGLY

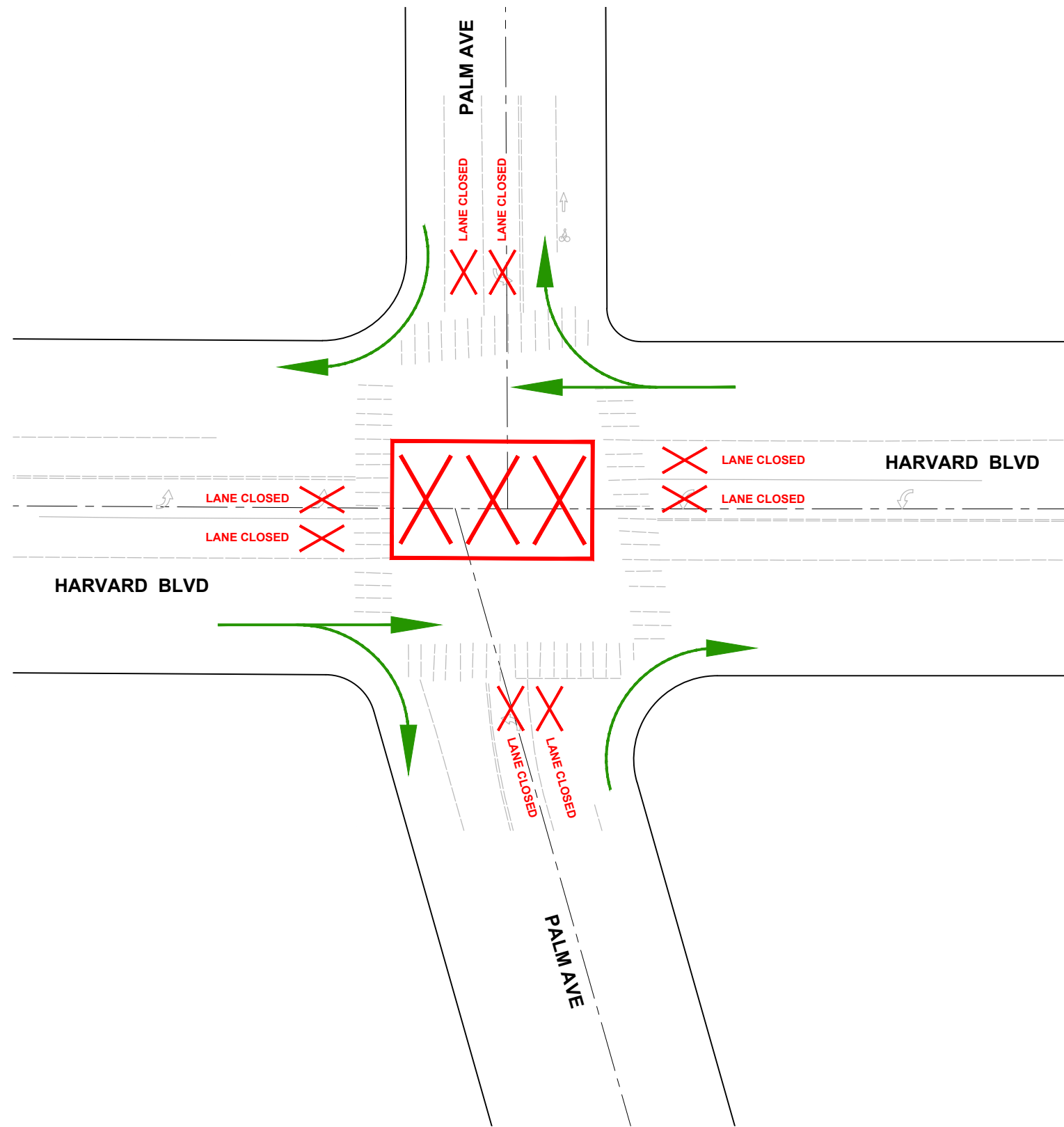
**HARVARD BLVD AND STECKEL DRIVE INTERSECTION**

B

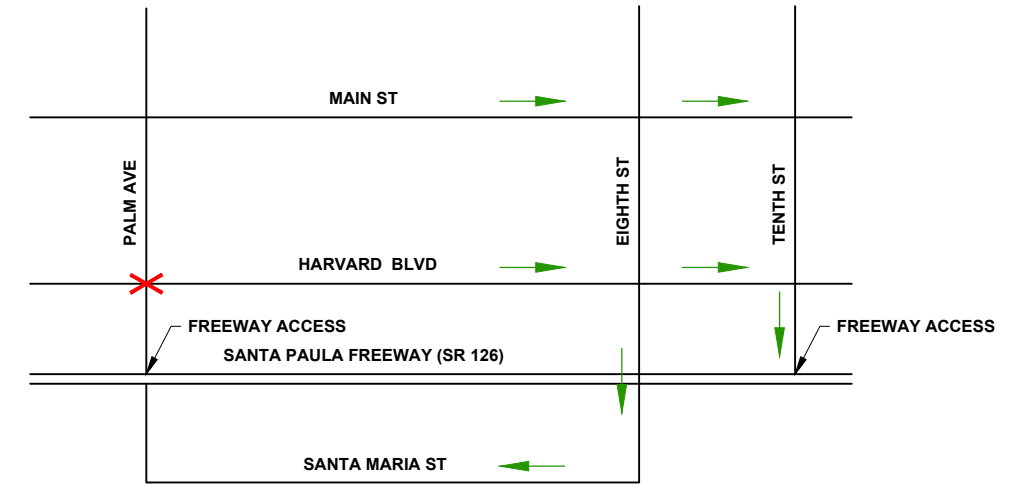


PREPARED BY:  
PHOENIX CIVIL ENGINEERING, INC.  
535 E. MAIN STREET  
SANTA PAULA, CA 93060  
(805) 658-6800





**HARVARD BLVD AND PALM AVE INTERSECTION**  
 SCALE: 1" = 40'



**FREEWAY ACCESS DETOUR MAP**  
 NO SCALE

- TWO NIGHT CLOSURE (TENTATIVELY 11 / 1 AND 11 / 2)
- WORK HOURS 9 PM TO 6 AM
- NO LEFT OR THROUGH MOVEMENTS ALONG PALM AVENUE IN THE NORTH / SOUTH DIRECTION

VERIFY SCALES  
 BAR IS ONE INCH ON ORIGINAL DRAWING  
 0 ————— 1  
 IF NOT ONE INCH ON THIS SHEET,  
 ADJUST SCALES ACCORDINGLY



PREPARED BY:  
 PHOENIX CIVIL ENGINEERING, INC.  
 535 E. MAIN STREET  
 SANTA PAULA, CA 93060  
 (805) 658-6800

